

## DCEMEV DALI Reporter

### Introduction

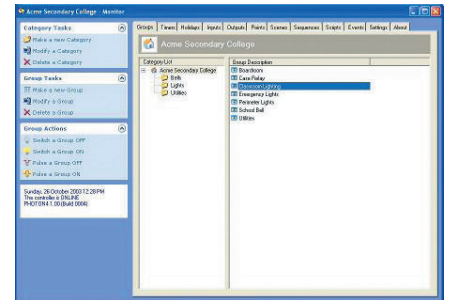
The DCBM Reporter software reports on the status of DALI devices. This includes health and performance reports of ballasts and lamps. Where ballasts are indicated as emergency lighting, the DCBM Reporter can generate lists, controllers and DALI addresses where devices are not working.

### Ordering Information

Part Number	Description
DCEMEV-U	Emergency Monitor, Emergency Exit Light Control. Unlimited Controllers
DCEMEV-30	Emergency Monitor, Emergency Exit Light Control. 30 Controllers
DCEMEV-10	Emergency Monitor, Emergency Exit Light Control. 10 Controllers
DCEMEV-1	Emergency Monitor, Emergency Exit Light Control. 1 Controller

### Features

- The DCBM Reporter is a tool used by building management in regular intervals, such as for the production of monthly reports.
- Reports can be converted to PDF or CVS (Excel) to be incorporated into building management reporting databases.
- The DCBM Reporter connects to DALIcontrol line controllers (via the Ethernet) to access ballast information.
- Filtering is accomplished using report templates which specify what information will go into a given report.
- The DCBM Reporter utilises report templates which are based on information retrieved from the DALIcontrol line controller configuration files.
- Configuration files can be filled with ballast information by using the DCBM Monitor software.
- Report templates can be defined to extract specific information from the ballasts and place this information into test records within the Status Report database.
- Tests are defined according to the report template configuration information. When a test is run, the Status Report database stores all the test data collected into records.
- When a ballast is interrogated, the record of its activity is stored as either a general status or emergency lighting record.



DCEMEV



### Clipsal Australia Pty Ltd

A member of Schneider Electric

#### Head Office

33-37 Port Wakefield Road,  
Gepps Cross, South Australia 5094

#### Postal Address

PO Box 132  
Enfield Plaza, South Australia 5085

Website [www.dalicontrol.com](http://www.dalicontrol.com)

Contact your local Schneider Electric office for sales and technical support. [www.clipsal.com/trade/contact\\_us](http://www.clipsal.com/trade/contact_us)

You can find this data sheet and many others online in PDF format at: [www.dalicontrol.com](http://www.dalicontrol.com)



Clipsal Australia Pty Ltd reserves the right to change specifications, modify designs and discontinue items without incurring obligation and whilst every effort is made to ensure that descriptions, specifications and other information in this catalogue are correct, no warranty is given in respect thereof and the company shall not be liable for any error therein.

© Clipsal Australia Pty Ltd

This material is copyright under Australian and international laws. Except as permitted under the relevant law, no part of this work may be reproduced by any process without prior written permission of and acknowledgement to Clipsal Australia Pty Ltd.