



Integrati Professional Software

Major Features added in Version 3

Advanced Reports (Optional License)

- Create custom reports with Integrati Report Designer.
- 15 predefined sample reports are provided including Time on Site and Muster Reports.
- Flexible report generator: full customisation and formatting control.
- Pivoting, Grouping and Aggregating of Data.
- Import charts, images, maps and logos.
- Output reports in a variety of formats including: PDF, CSV, XML, HTML, JPEG and more.



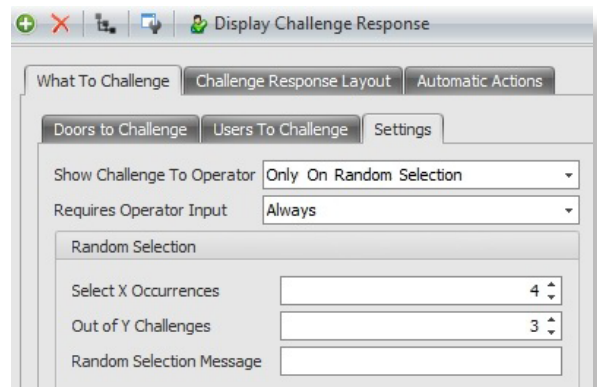
Photo ID (Optional License)

- Design, edit and print Photo ID cards.
- Double sided portrait and landscape designs.
- Configurable template size to suit cards, labels or most other media.
- Supports placement and editing of images, labels, barcodes and drawing tools.
- Create and Assign Multiple Card Templates.
- Auto-populate fields from User Database.



Operator Challenge (Optional License)

- Random selection of Users for Drug and/or Alcohol testing.
- User Photo pop-up to identify selected Users.
- Allows Operator Intervention to allow or Deny Access.
- Configurable response screen can present the Operator with images, instructions and "Allow" and "Deny" buttons.
- Automatically carry out a range of actions when a User is stopped or selected.
- Easy to configure.



Integration to Jacques Intercoms (Optional License)

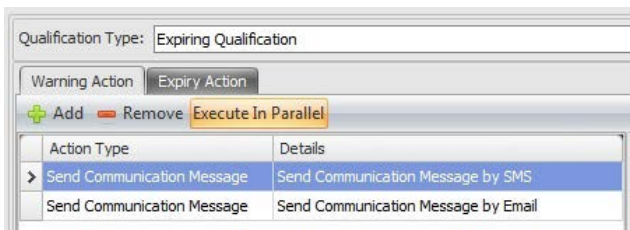


- Automatically generate alerts in Integrati when an Intercom or help point button is pressed.
- Automatically display maps and video screens when an Intercom alert is activated.
- Accept and Cancel Jacques Audio Calls directly from the Integrati Screen.



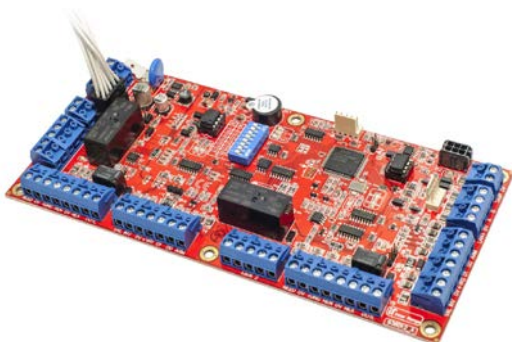
User Qualifications (Optional License)

- Expiry of a User's Qualification automatically changes the User's access permissions.
- Qualification can be based upon an expiry date or a decrementing credit or count.
- Manage use of Car Parks, Vending Machines, Photocopiers etc through decrementing credits.
- Transactions of various amounts may be deducted.
- Configure Warning and Expiry actions to occur automatically.
- Send text or e-mail reminders to Users that their qualification or credit is about to expire.
- Update multiple User Qualifications or Credits simultaneously.



Support for Intelligent LAN Access Module and Offline Behaviour.

- Supports connection and use of new Intelligent LAN Access Module (ILAM).
- Assignment of Offline Permissions.
- See Hardware Release Notes for further information on the ILAM.



Additional Video Integration Plugins (Optional Camera Integration Licenses Required)

Video Integration plugins are now available for Integrati for the following CCTV vendor systems:

- Geutebruck
- Avigilon
- HIK Vision
- Milestone (MIP-SDK)

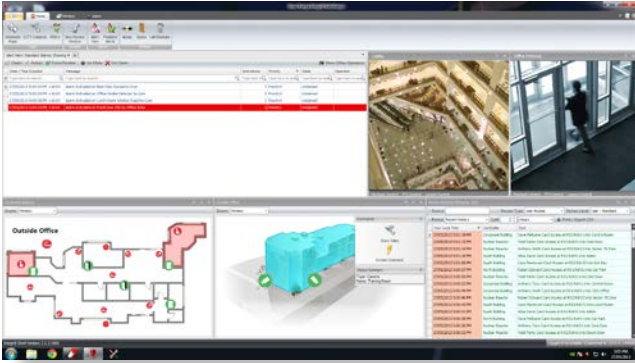
The exact scope of integration varies from one Vendor system to the next, however, many of these new interfaces support bidirectional alarm transmission. Not only can alarm events in Integrati be used to trigger actions on the CCTV system but video analytic information and CCTV alarm events may also be passed via IP from the CCTV system to Integrati.

Please refer to the individual CCTV Capabilities Guide on the Inner Range web site for confirmation of version compatibility and functionality.





GateKeeper for Integrati



- New "Auto Login" Feature added to GateKeeper.
- GateKeeper application may be used as a Schematic Noticeboard or Indicator Panel.

Upload of Macros from Controller

- Macros may be uploaded from Controllers.
- Upload, View, Edit and Save Macros from within the Integrati Application, even Macros that originated from a Controller.

Integration Server

- New Integration Server section to collectively manage all Integrated Systems such as CCTV, Intercoms and Building Management Systems.
- Additional support for device integration.

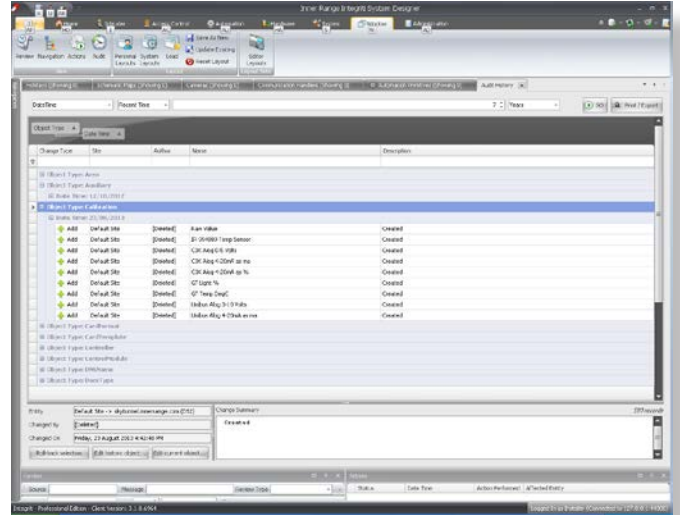
Multiple Time Zones

- Full Support for Multiple Time Zones.
- Date and Time Fields now use a Changeable Time Zone Offset.

Time Filters

- Additional "Recent" and "Previous" time filters.
- Time Filters are used extensively throughout the system configuration.

Forensic Audit Trail



- New Dedicated section to View and Manage Forensic Audit Trail Events.
- View and Manage all changes made by a specific Operator.
- View and Manage all changes made on a specific Date.
- Group Audit Trail entries by Operator, Date, Time, Action, Affected Entity
- Undo individual or multiple changes.

Improvements to Task Actions

- Run an External Program as a Task Action.
- Task Actions may be invoked from several areas of system configuration.

Additional Commissioning Tools

- Additional Wizard to assist in adding System Inputs.
- Additional Alarm Commissioning Report showing the ContactID Code, Group and Point for all monitored inputs.