



CLIPSAL®

by Schneider Electric

Electricity Monitor Kit EM422EM-E-KMTS

Quick Start Guide



What's in the box?

- 1 x Sensor
- 1 x Wireless display
- 1 x Transmitter
- 1 x USB cable

Also included:

3xAAA 1.5V batteries

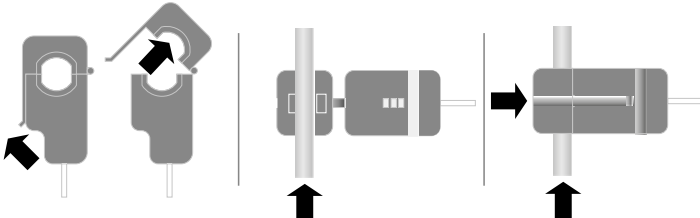
Quick start guide and installation instructions



Note: At the end of its serviceable life, the components should not be treated as general waste. They should be handed over to the applicable collection point for electronic equipment.

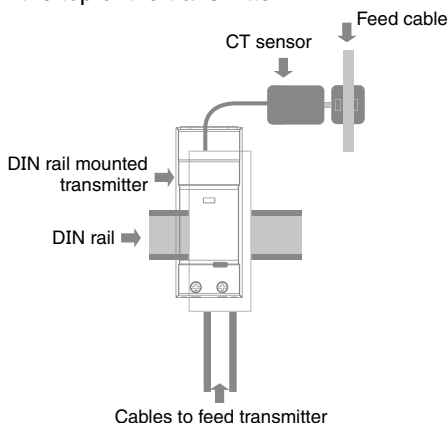
1.0 Installation Instructions (meter box)

The installation must be carried out by a licensed electrical tradesperson.



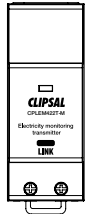
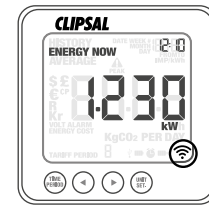
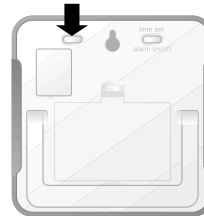
Attach the sensor to the Active/Live outgoing supply cable in the meter box. The sensor clip should be fitted over the insulated red phase wire running into or out of the electricity meter box. At no time should force or undue pressure be applied to any wiring or connections.

The transmitter is not battery powered and needs to be supplied by mains power. Connect terminal L1 and N of the transmitter and insert the plug of the sensor cable into any of the three input sockets on the top of the transmitter.



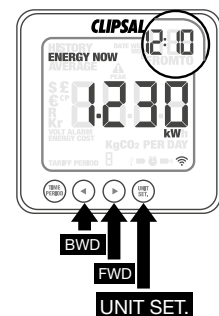
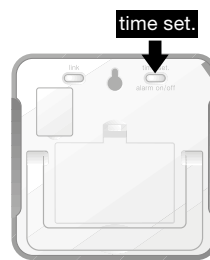
2.0 Link transmitter and display

Push the link button located on the back of the display unit. The LINK icon on the screen will flash. Press the button on the transmitter to complete synchronisation. If the LINK is completed you will see the LINK icon is solid on the screen.



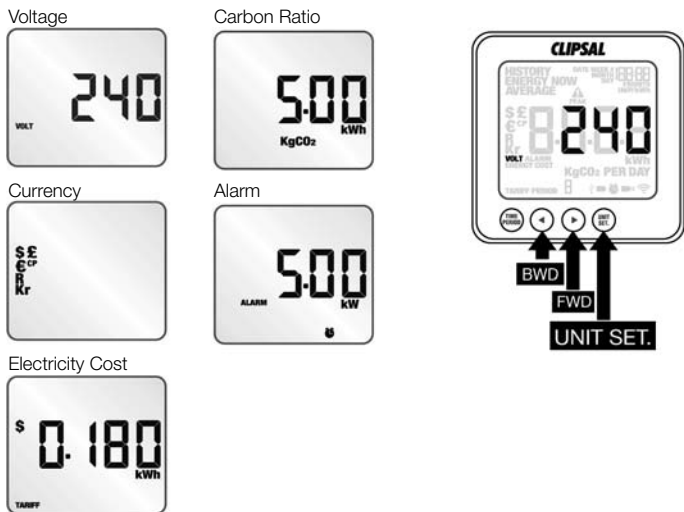
3.0 Setting date and time

Find the **time set** button located at the back of the display. Hold for two seconds. Use the **backward** and **forward** buttons to set the numbers. Press the **UNIT SET** button to move to the next setting.



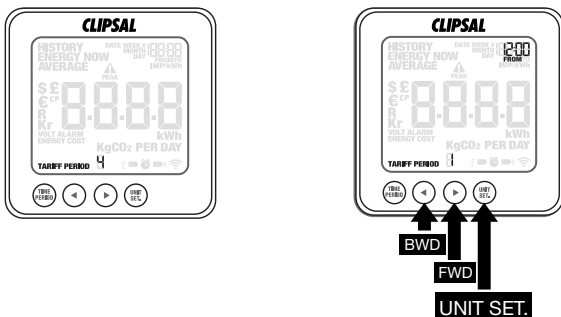
4.0 Setting other information

Press and hold the **UNIT SET** button for two seconds. Use the **backward** and **forward** buttons to set the numbers. Press the **UNIT SET** button to move on to the next setting. Throughout the set-up process, push the **TIME PERIOD** button, so at any time, your settings will be saved and you will exit the **FUNCTION** setting mode.



5.0 Setting multiple tariffs

Press and hold the **UNIT SET** button for two seconds. Press the **UNIT SET** button two more times to find the **TARIFF** mode. Use the **backward** and **forward** buttons to set **START TIME** for **TARIFF 1**. Press **UNIT SET** button to set the end of **TARIFF 1** using **backward** and **forward** buttons again. Press **UNIT SET** button to finish. You will only need to use this setting if you have a multiple tariffs.

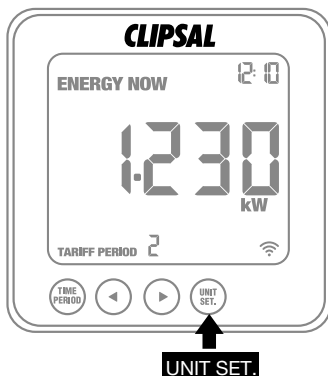


6.0 Instant mode display

Push the **UNIT SET** button to change the units between electricity (kW), cost per day and carbon emissions per day.

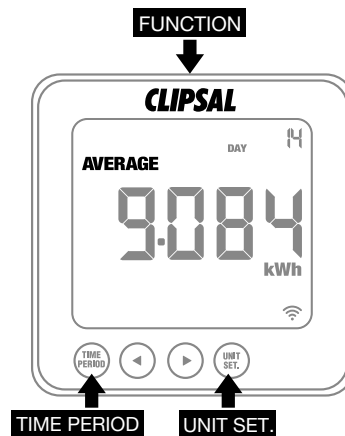
Battery Warnings:

- Transmitter
- Display
- Alarm On



7.0 Average mode display

Push the **function** button to access **AVERAGE** mode. The information shown in this mode is the average calculated since the monitor was switched on for the first time. Push the **TIME PERIOD** button to access daily, weekly and monthly average information. Push the **UNIT SET** button to change between the units kWh, cost and carbon emissions.



8.0 History mode display

Push the **Function** button to access **HISTORY** mode. The **HISTORY** mode allows access to the information stored on the display from previous weeks and months. Push the **TIME PERIOD** button to access total electricity consumption for a specific day, week or month. Push the **UNIT SET** button to change the units between kWh, cost and carbon emissions. For further details in regards to the hardware installation and display options, please refer to the Installation Instructions.



9.0 Download energy monitoring software

Download the Energy Monitoring Software and User Manual from the Clipsal website www.clipsal.com/Ecomind. Use the supplied USB cable to establish a connection between the energy monitor display and your PC.



Schneider Electric (Australia) Pty Ltd

Contact us: clipsal.com/feedback

National Customer Care Enquiries:

Tel: 1300 2025 25 Fax: 1300 2025 56



clipsal.com

Schneider Electric (Australia) Pty Ltd reserves the right to change specifications, modify designs and discontinue items without incurring obligation and whilst every effort is made to ensure that descriptions, specifications and other information in this catalogue are correct, no warranty is given in respect thereof and the company shall not be liable for any error therein.

© 2011 Schneider Electric. All Rights Reserved.

Trademarks are owned by Schneider Electric Industries SAS or its affiliated companies.